

# Over & low voltage release MZ215



MZ215 is the ideal solution to protect equipments from over and low voltage problems. Unique modular design and simple wiring makes it convenient to mount in standard enclosures with Hager MCB, RCCB or RCBO.

MZ215 continuously monitors voltage between Phase and Neutral to disconnect when voltage is high or low.

- Supply Voltage: 230 VAC
- Over Voltage: >267VAC
- Terminal Size: 6 sq. mm. (flexible) 10 sq. mm. (rigid)
- Connections: L, N
- Low Voltage: 60VAC<U<170VAC

## Indicating Lights



LED indicators for status indication in electrical networks.

- LED technology for maintenance free long life
- Low power consumption
- Superior aesthetics
- Special 3 in 1 indicators and 2 in 1 indicators
- Modular LEDs offer value add in the DBs with RYB and ON-OFF-TRIP indication in compact one module size

- Conforms to IEC 60947-1 and IEC 62094-1
- Power consumption - 0.8 watts
- LED technology
- Supply voltage - 230VAC
- Burning hours - upto 100,000 hours

# Plug & Sockets



Metal-clad plug & socket outlets for supplying specific loads.

- Type: Metal clad with scrapping earth
- Standard: Conforms to Is8804
- Material: Cast aluminium alloy
- Range: Plugs, Sockets
- Rating: 10A - 63A
- Color: Blue for 250VAC, Red for 440VAC

## Time switches



Time switches are used in residential, commercial and industrial premises to improve comfort and save energy by switching loads automatically as per real time.

- Range: Mechanical daily, weekly, digital daily, weekly, astronomical timer, yearly timer
- Easy programming using keypad on product or using programming software
- Programming of impulses helps in applications like school bells, watering of plants, defrosting refrigerator etc.
- Holiday mode helps keeping the loads OFF for a pre-defined duration
- Time switches can be programmed without power supply

# Presence & movement detectors



Presence and movement detectors are used to switch on/off electrical loads.

- Range: Movement detectors, dual lens presence detector, presence sensor with light regulation, wall mounted outdoor movement detector
- Adjustable off time delay
- Adjustable lux setting for daylight override function
- Wider detection area
- Remote controllability
- Smart and sleek design

## Contactors



For remote switching of power & control circuits.

- Rating - 25A, 40A & 63A
- Utilization category-AC7A (for resistive loads)
- No of poles - 2NO, 1NO+1NC, 2NO+2NC, 3NO, 3NO+1NC, 4NO
- Coil voltage - 230V AC, 50 Hz

# Wiring accessories

Berker Serie 1930



Berker Serie Glas



Berker B.3



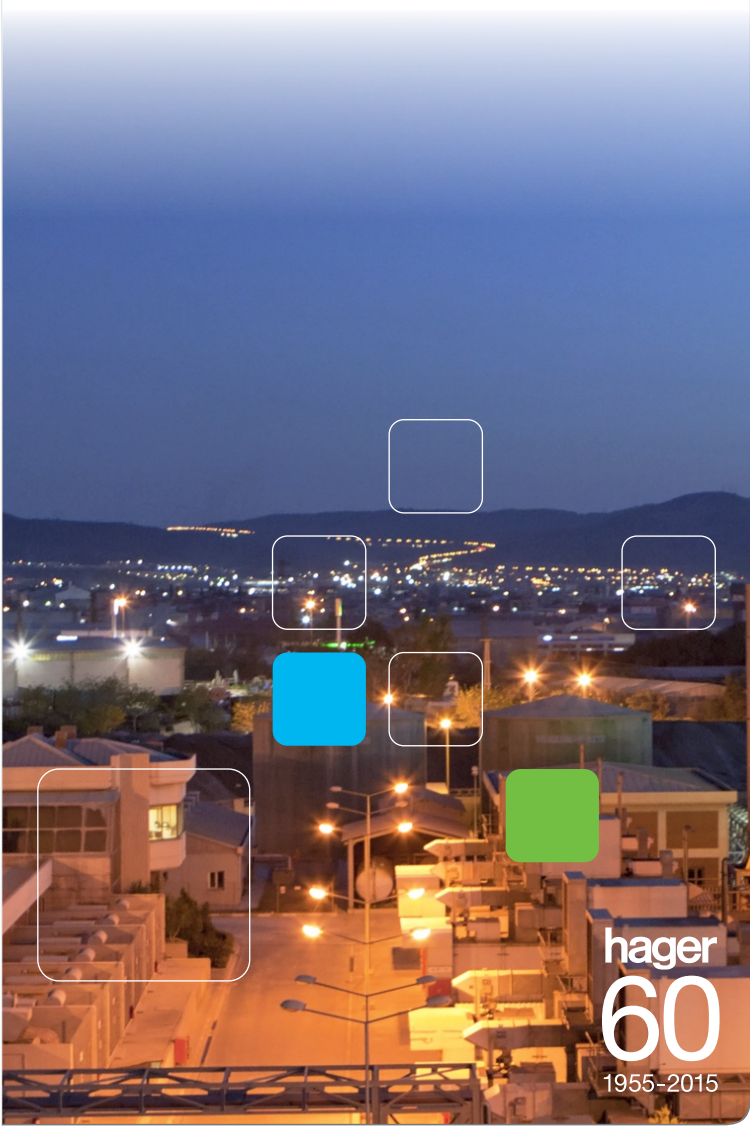
Berker B.7



Berker S.1



Hager unveils premium wiring accessories from Berker, an industry leader in design and innovation since 1919. Designed to give you complete peace of mind, switches from Berker by Hager make your home comfortable, stylish & elegant.



## The specialist for electrical installations

Since 1955 Hager is the specialist for electrical installations in residential and commercial sectors, as a standard you can receive everything from one source: systems and solutions with high quality, reliability and ease of installation.

**hager**  
**60**  
1955-2015



## novello<sup>+</sup> distribution boards

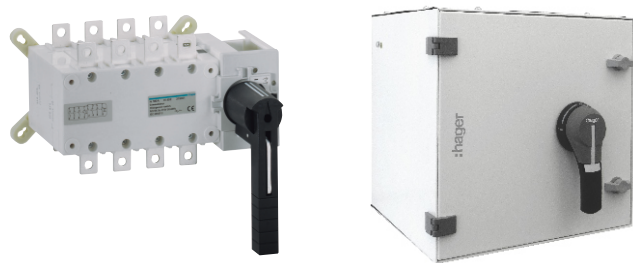


- Patented gland plate locking system with minimal screws
- Patented IP2X neutral terminals with flexible position on the chassis
- Lab certified IP43 protection in double door versions. Achieved by dual neoprene gasket between door, frame & wall box
- Spirit level to ensure accurate & professional alignment of wall box
- Double packaging for door protection until installation is complete
- Reusable cable management kit
- Site upgradable door handle with key lock facility
- Star washers for earthing

- As per IS 8623 - III
- SPN, TPN, PPI, Vertical, Phase Segregated, Plug & Socket, Enclosures etc.
- IP30 for Single door DBs
- IP43/54 for double door DBs
- Impact resistance IK09
- Color : RAL 9010, matt finish



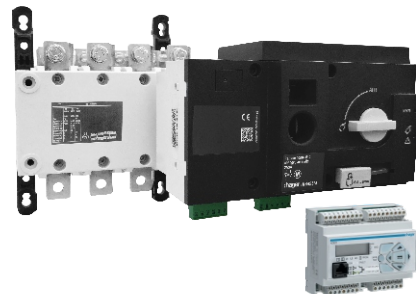
## Manual changeover switches



Allows manual switch, changeover switch or on load power circuit permutation

- Complies with IEC 60947-3
- Suitable for AC23
- Rating: 63A - 1600A
- Lockable position: 0

## Automatic transfer switches



ATS offers complete peace of mind during power failure with auto genset start along with safe and reliable changeover operation. Modular design controller enables flexibility to modify parameters along with display of information.

- Complies IEC 60947-3
- Suitable for AC23A / AC23B
- Rating: 125A - 1600A
- Lockable position: 0



## Automatic changeover with current limiter



Convenient solution allowing changeover operation on mains failure and restricting load current

- Indicates the LED for Mains ON, Genset ON and Genset Overload
- Blinking LED for overload and permanent LED for overload trip. Blinking Genset LED for GEN start situation
- Auto reset if Main supply resumes on genset trip
- RoHS compliant & CE Marking

## Modular changeover switches

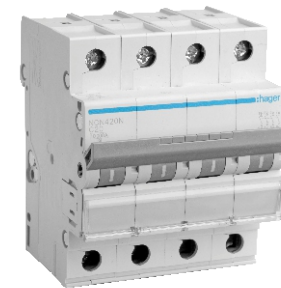


Allows changeover from electricity boards supply to generator supply & vice-versa

- Rating: 25A & 40A



## h3 MCBs



Comprehensive range offering reliable solution for protection of installations against over-current.

- Conforms to IS / IEC 60898-1:2002, IEC 60898 - 1995
- Tripping characteristics – B, C & D curves
- ISI Marking
- Ratings – 0.5 to 63
- No. of poles – 1P, 2P, 3P & 4P
- Breaking capacity – 10kA (as per IS/IEC 60898)

## RCDs



Contemporary range with user friendly features to ensure earth leakage protection.

Make your homes and equipments safe from harmful accidental currents.

- Conforms to IS 12640-1:2008, IEC 61008-1:2012
- No. of poles - 2P & 4P
- Trip class - class AC and class Hi
- ISI marking
- Ratings - 16A, 25A, 40A, 63A, 100A
- Sensitivity - 10mA, 30mA, 100mA & 300mA
- Protection against nuisance tripping caused by switching transients



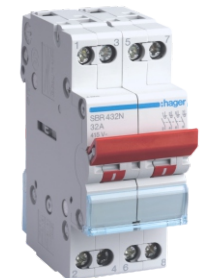
## h3 MCCBs 16 to 1600A



MCCBs provides safe and easy solution for low voltage electrical circuit protection. The state of the art circuit breakers offer both designers and installers wide range of features and benefits.

- Conforms to IEC 60947-2
- Breaking capacity (Icu): 18, 25, 40, 50, 65, 70 kA
- 3 pole and 4 Poles
- Current limiting type (Cat A)
- 6 frame sizes: x160, x250, h250, h630, h1000, h1600
- Thermal magnetic and electronic trip units
- Complete range of accessories

## Isolating switches



AC22A devices used as switch disconnectors in electrical circuit

- Standard IEC 60974-III
- Poles 2P, 3P, 4P
- Positions ON-OFF
- Current Rating 25A - 125A
- Operating Voltage 415VAC
- CE Marking

### Contact Us:

#### Hager Electro Private Limited

**Registered office:** Office 2A, First Floor, North Court Building, Opp. Joggers Park, Kalyani Nagar, Pune - 411006 India Tel: +91 20 41477500 Fax: +91 20 41477510

**Delhi Sales Office:** B 217 Tower B, DLF Towers, Jasola, New Delhi - 110025 India Tel: +91 11 49677500 Fax: +91 11 49677555

**Mumbai Sales Office:** Office # 1301A, Tower 3, Indiabulls Finance Centre, Elphistone Road, Mumbai-400013 India Tel: +91 22 71813200

Toll free no.: 18001035440 Email:hagerwow@hager.co.in