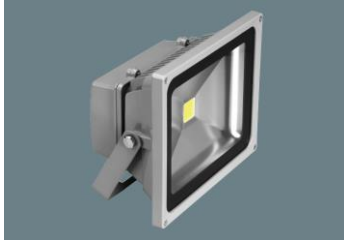


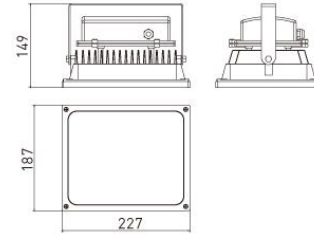
Ref. No.

| | | |
|----------------------|---------------------|-------------|
| Type of luminaire | Commercial Lighting | Flood Light |
| Set model No. | AFL010306 | |
| Individual model No. | | |

Image photo



Dimension and materials



| | | | |
|----------------------|------------|-------------------|---------------------------|
| Type of light source | LED | Cut out size | |
| Power input | 30 W | Weight | 1.82 kg |
| Power voltage | AC220-240V | Body | Aluminum (Spray Painting) |
| Input frequency | 50/60Hz | Reflector | |
| Driver | Integral | Diffuser | Glass |
| IP rating | IP65 | Trim | |
| Beam angle | 150 deg. | Caseing | |
| System lumen output | 2400 lm | | |
| System efficacy | 80.0 lm/W | Photometric chart | |
| CCT | 6000K | | |
| CRI | 70 | | |
| Life time | 50000 | | |
| Brand | Panasonic | | |
| Country of origin | | | |

Remarks